



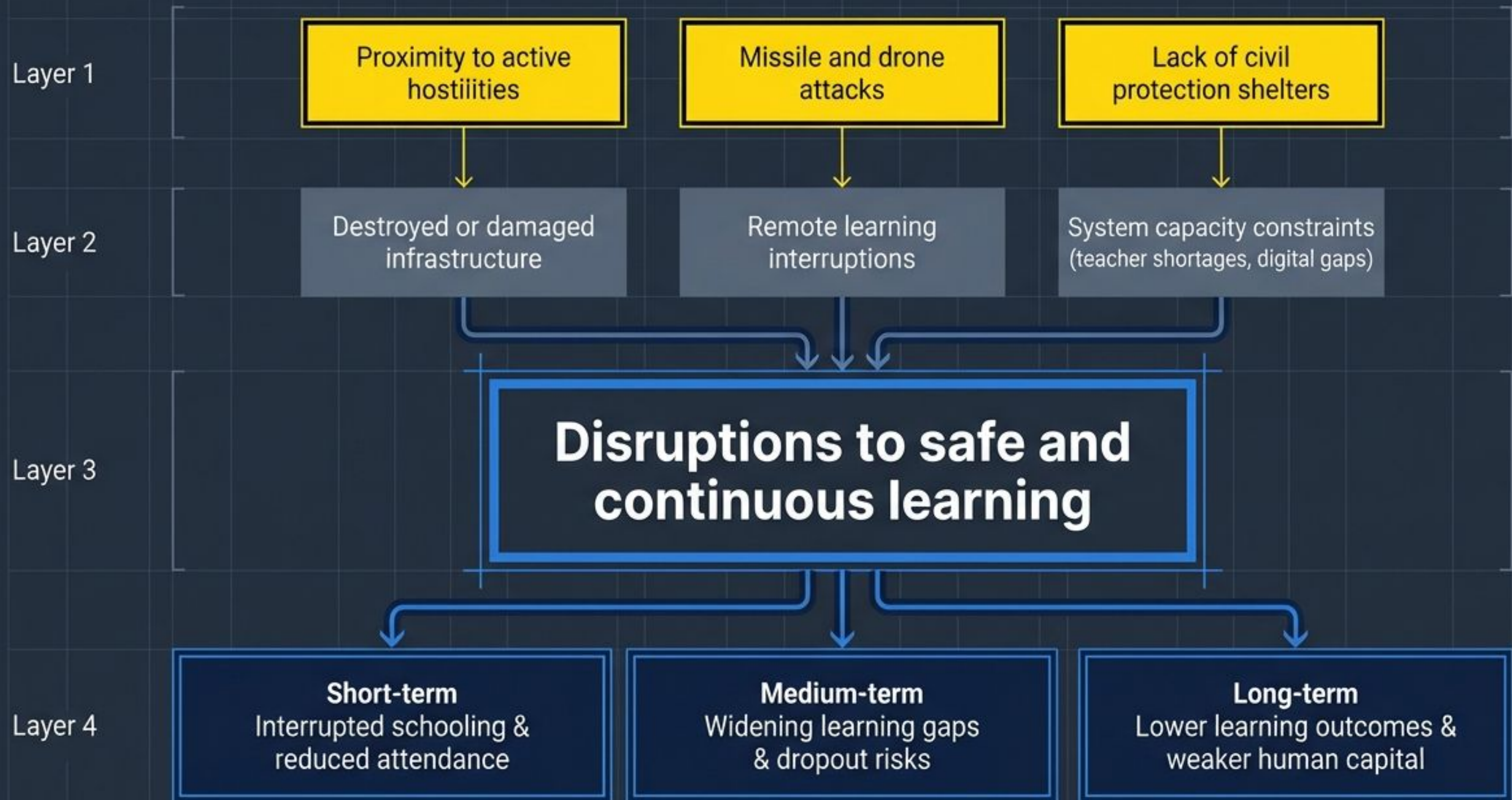
THE RESILIENCE BLUEPRINT

Adapting Ukraine's General Secondary Education Framework for Wartime and Post-War Recovery

A data-driven framework for safe, continuous, and equitable learning.

! This concept is a model and is applicable exclusively within the framework of training and competency development activities carried out by the ETF for partner countries.

The Systemic Shock of Armed Aggression



Engineering a Resilient Education Ecosystem

Dual Purpose Architecture:
Maintaining structural survival while actively advancing the European-aligned New Ukrainian School (NUS) reform.

IMPACT: Safe, continuous, and equitable general secondary education in Ukraine under crisis and recovery conditions.

Outcome 1:
Safety

Outcome 2:
Continuity

Outcome 3:
Quality

Outcome 4:
Inclusion

OUTPUTS

Shelters &
Safety

Digital & Hybrid
Systems

Catch-up
Programmes

Teacher NUS
Training

Inclusion &
Psych Support

Pillar 1: Securing the Physical Learning Environment



Civil Protection Shelters

Baseline: Partial coverage



Safe In-Person Attendance

Baseline: Varied by region



Minimum Safety Standards

Baseline: Partial

Diagnostic Readout: General secondary schools must operate under conditions that ensure physical safety, protection during emergencies, and resilience of the learning process.

Pillar 2: Sustaining Continuity and Mitigating Learning Loss



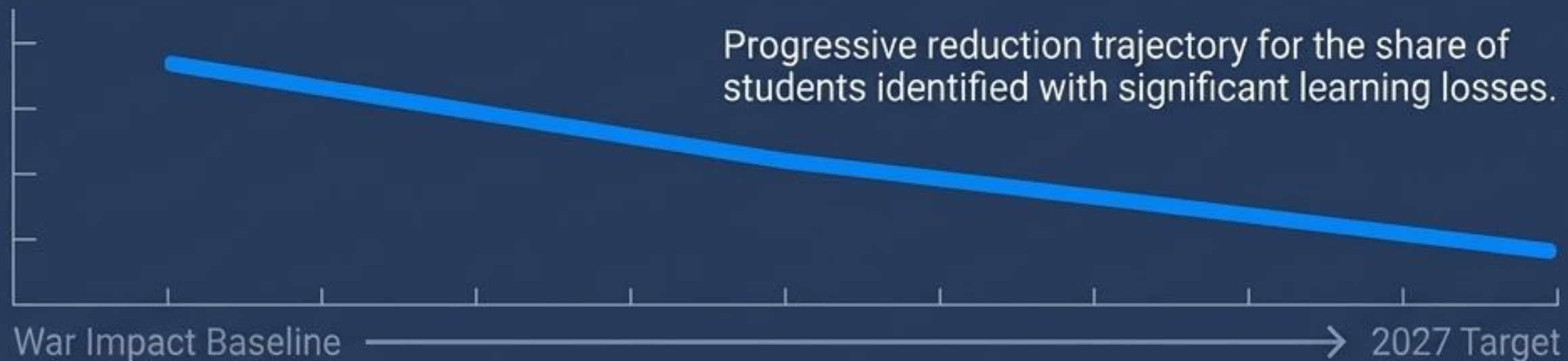
Uninterrupted Learning
Baseline: Disrupted



System-Wide Attendance
Baseline: Uneven



Catch-Up Programme Participation
Baseline: Limited



Pillar 3: Advancing Modernization and Quality Outcomes

Target Dashboard



100%

NUS Curriculum Adoption

Baseline: Expanding

Target Dashboard



≥80%

NUS Pedagogical Training

Baseline: Partial

Target Dashboard



90%

Primary Offline Learning

Baseline: ~63% (2024)

Structural Priority: Reversing the downward trend in national assessments and PISA domains to achieve an upward trajectory toward EU averages.

Pillar 4: Guaranteeing Equity and Barrier-Free Inclusion

Target Dashboard



**Ukrainian Education
Abroad**

Baseline: ~75%

Target Dashboard



**Psychological Support
Availability**

Baseline: Uneven

Target Dashboard



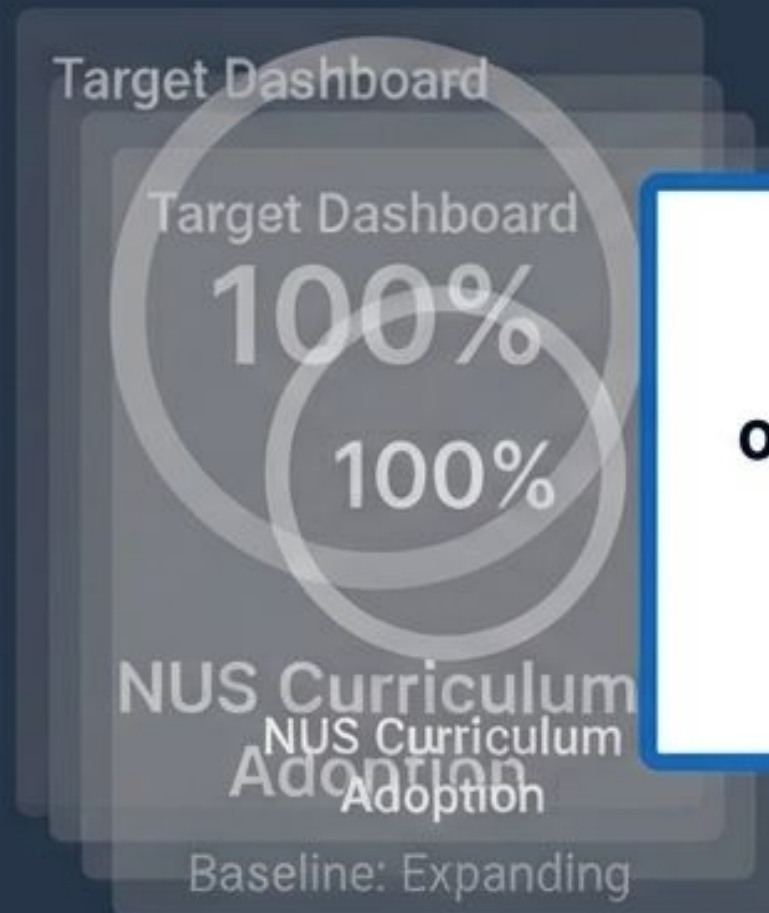
**SEN Mainstream
Participation**

Baseline: Limited

Diagnostic Note: This pillar strictly prioritizes internally displaced persons (IDPs), learners abroad, and children requiring barrier-free access.

Static Targets Cannot Survive Dynamic Threats

The Aspirational Framework



The Operational Reality

A uniform strategy fails in heterogeneous threat environments. To achieve our overarching goals, the framework dynamically recalibrates baseline expectations and local targets using a Risk-Differentiated Assessment Mechanism.



Diagnostic Note: This pillar strictly prioritizes non-traditional and cross-sector infrastructure damage and demographic shifts.

The Threat Calculation Engine

Infrastructure Proximity Risk

(Critical objects within 1000m)

0.25

Strike Risk

(Historical missile/drone incidents)

0.25

Artillery Exposure Risk

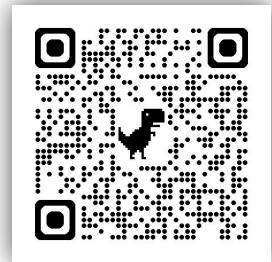
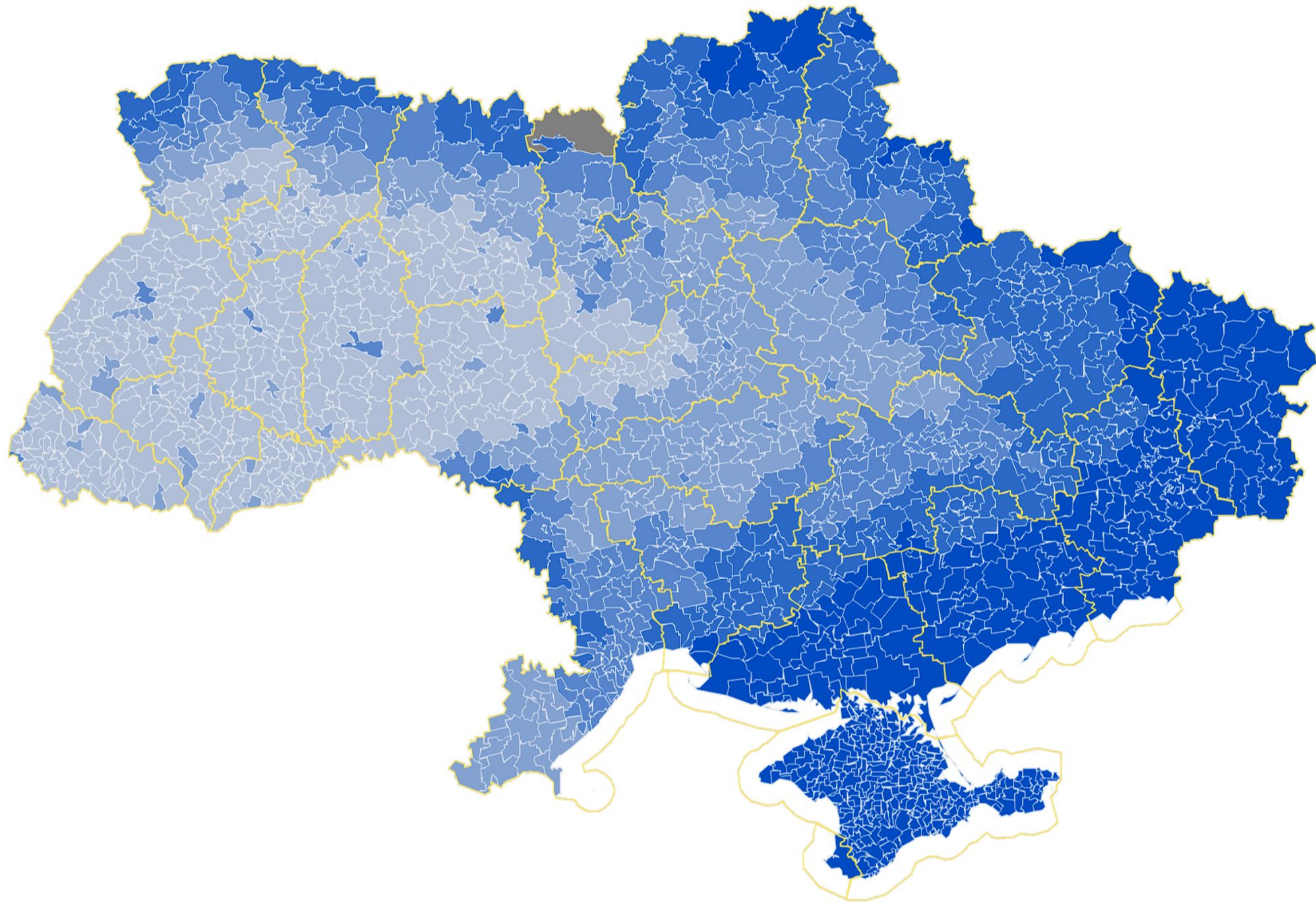
(Proximity to potential artillery fire)

0.50

$$R_n = 0.25R_{\text{infra}} + 0.25R_{\text{strike}} + 0.5R_{\text{artillery}}$$

Methodology officially approved by the Cabinet of Ministers of Ukraine to quantify localized threat severity.

Output: Composite School Risk Score



Methodology



Map

The Risk-Differentiated Policy Matrix

Risk Category	Learning Model	Priority Interventions	Target In-Person	Target Shelters	Target Catch-up
Insurmountable	Distance learning	Relocation of services	N/A	N/A	N/A
Very High	Blended learning	Shelters, digital tools	≥50%	100%	≥80%
High	Hybrid model	Infrastructure protection	≥50%	100%	≥80%
Moderate	Primarily in-person	Resilience measures	≥75%	≥90%	≥60%
Satisfactory	In-person learning	Reform implementation	≥90%	≥80%	≥40%


Note: Resource allocation and KPI targets dynamically snap to this grid based on the real-time Threat Calculation Engine output.

The Dynamic Monitoring Ecosystem



Administrative and security datasets continuously update the composite risk index, enabling real-time policy prioritization rather than static yearly reporting.

An Architecture Built for Adaptation



Insurmountable

Satisfactory

- A fixed North Star: Safe, continuous, and equitable access to education.
- Four measurable pillars advancing the European-aligned NUS reform.
- A localized, risk-differentiated operational mechanism driven by real-time security data.

The framework ensures that while operational tactics dynamically adapt to the realities of war, the commitment to Ukrainian human capital remains unshakeable.