

RIGA CITY SCHOOL NETWORK

2001-2025

Lāsma Lancmane

Acting Head of the Education Department
of the Department of Education, Culture and
Sports of Riga City Municipality



12.05.2025.

4TH LARGEST NORTH-EUROPEAN CITY

RIGA IS ONE OF EUROPE'S **FASTEST EMERGING** LOCATIONS FOR BUSINESS.

CITY OF RIGA IS CONNECTED TO OVER **100+ INTERNATIONAL DESTINATIONS.**



Population in Latvia – **1 883 008**

Language – **Latvian**

Capital – Riga – **605 273**



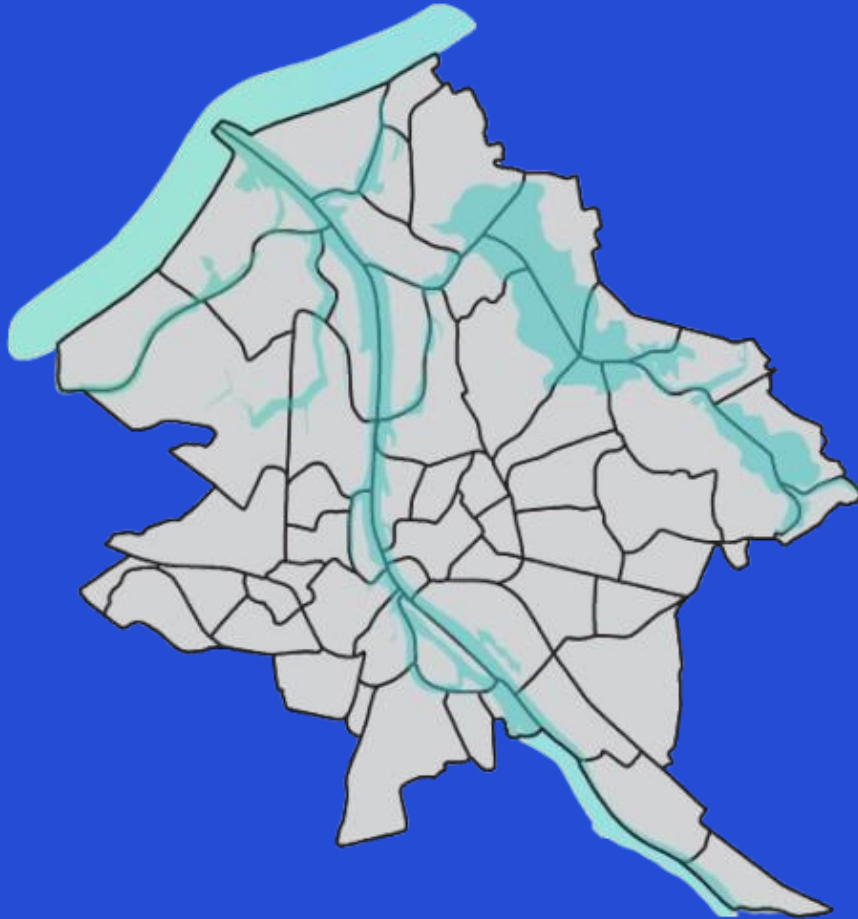
RIGA - METROPOLIS OF THE BALTICS

~ 1 million inhabitants
live in the Riga Metropolitan Area

Riga City gender ratio is:
45% male
55% female

The main ethnic groups in Riga are:

Latvian	47%
Russian	36%
Belarusian	4%
Ukrainian	3%
Polish	2%
Lithuanian	1%



Riga city has **58** neighborhoods,
divided into 6 territorial districts.



RIGA CITY EDUCATION IN FIGURES

MANAGEMENT OF THE EDUCATION ECOSYSTEM IN RIGA STATE CITY



RIGA STATE CITY MUNICIPALITY

EDUCATION, CULTURE
AND SPORTS COMMITTEE

CHAIRMAN OF THE RIGA CITY COUNCIL

EXECUTIVE DIRECTOR

DEPUTY
DIRECTOR

EDUCATION, CULTURE, AND SPORTS DEPARTMENT OF THE RIGA STATE CITY

FORMAL EDUCATION INSTITUTIONS

Pre-schools
Primary Schools
Principal Schools
Secondary Schools (incl. State
gymnasiums)

NON-FORMAL EDUCATION INSTITUTIONS

Music and Art Schools
Sports Schools
Children and Youth Interest
Education Institutions

Riga Education and
Informatively
Methodological
Centre (*RIIMC*)

Riga Central
Library

OTHER STRUCTURAL UNITS OF RIGA STATE CITY (A-Z)

- 1) City Development Department of RVP
- 2) Communication Department of Central Administration of Riga City Municipality
- 3) Property Department of RVP
- 4) Riga Digital Agency
- 5) Riga Neighbourhood Residents Centre
- 6) Riga Orphan's and Custody Court
- 7) Riga Social Service
- 8) Riga State City Municipal Police
- 9) Welfare Department of RVP

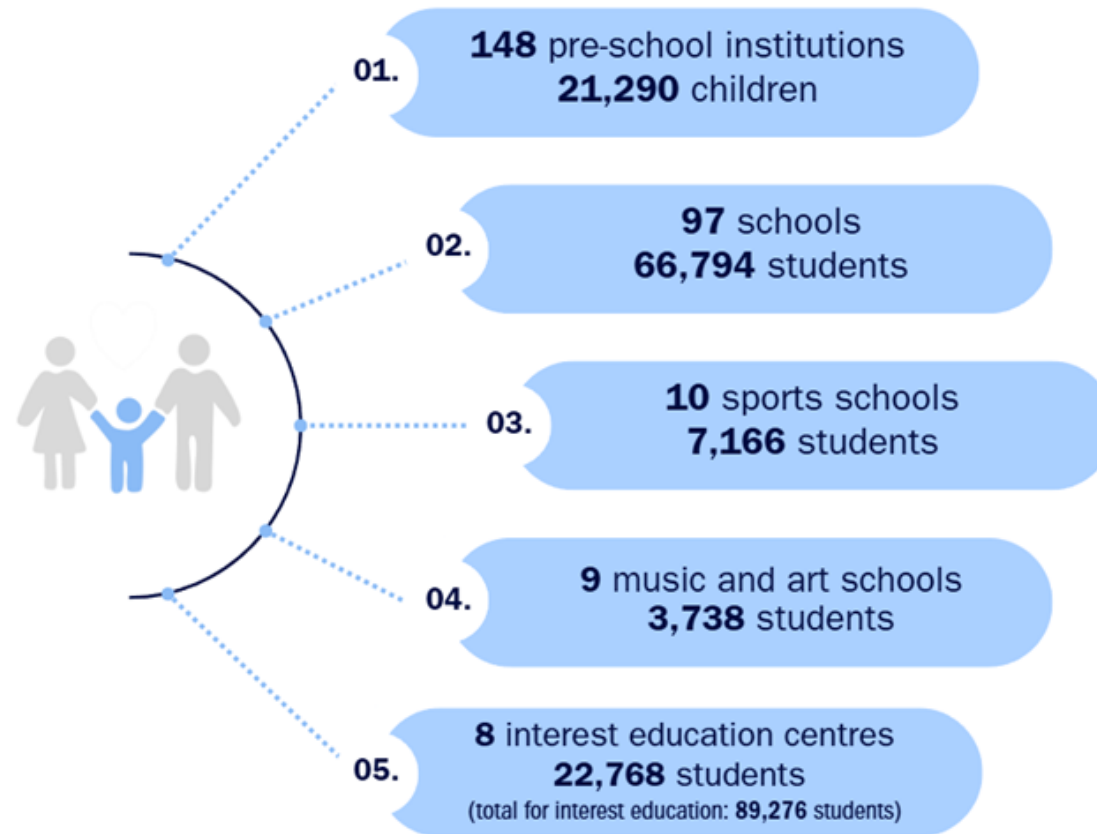
CAPITAL COMPANIES OF THE LOCAL GOVERNMENT (A-Z)

- 1) Rīgas meži (Riga Forests)
- 2) Rīgas satiksme (Riga Traffic)
- 3) Rīgas Zooloģiskais dārzs (Riga Zoo)



RIGA CITY EDUCATION IN FIGURES

NUMBER OF MUNICIPAL EDUCATION INSTITUTIONS AND STUDENTS (2024)

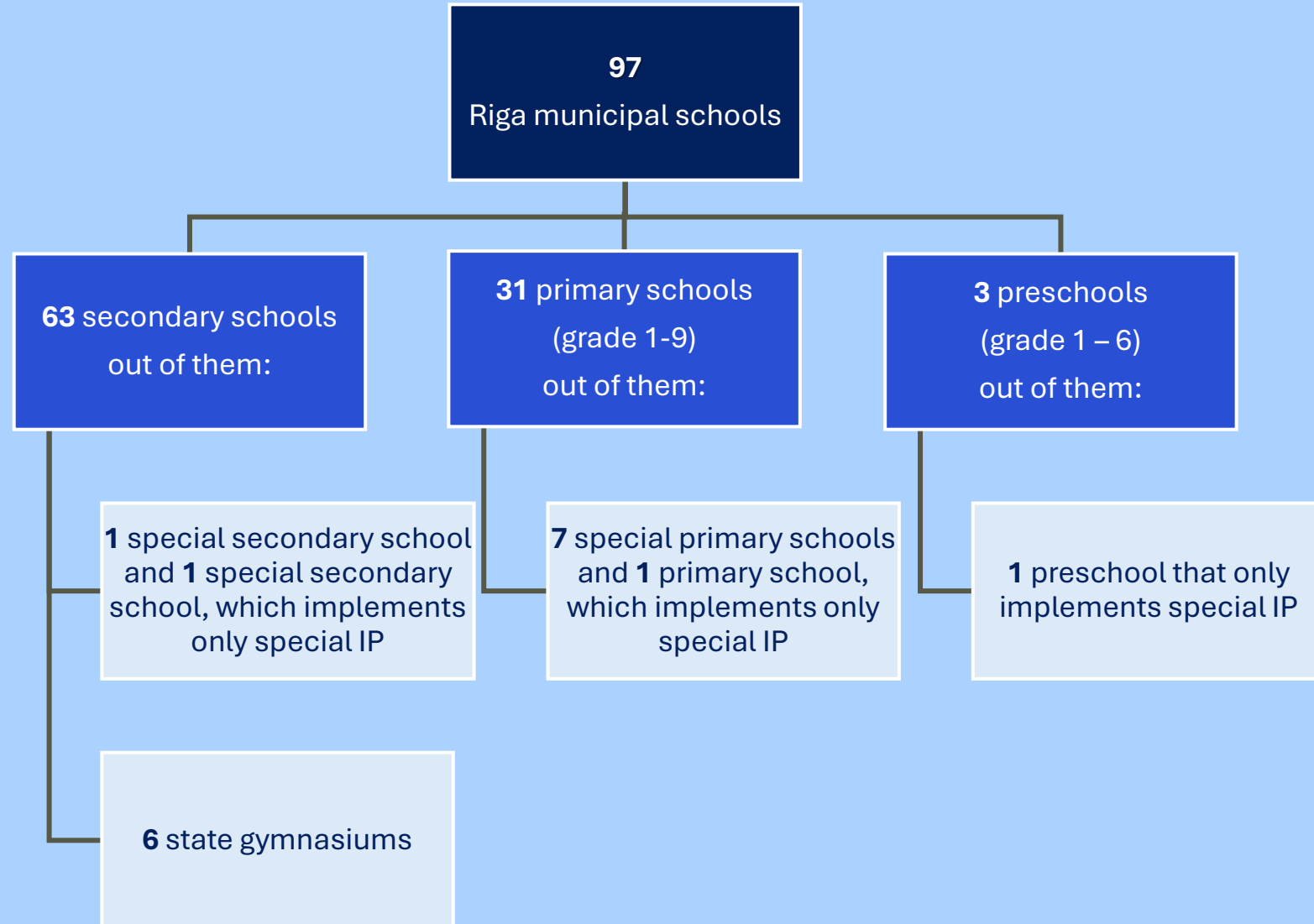


Together **108,246 children and young people** live in Riga (until the age of 18 years; data of the CSB, the beginning of 2024)

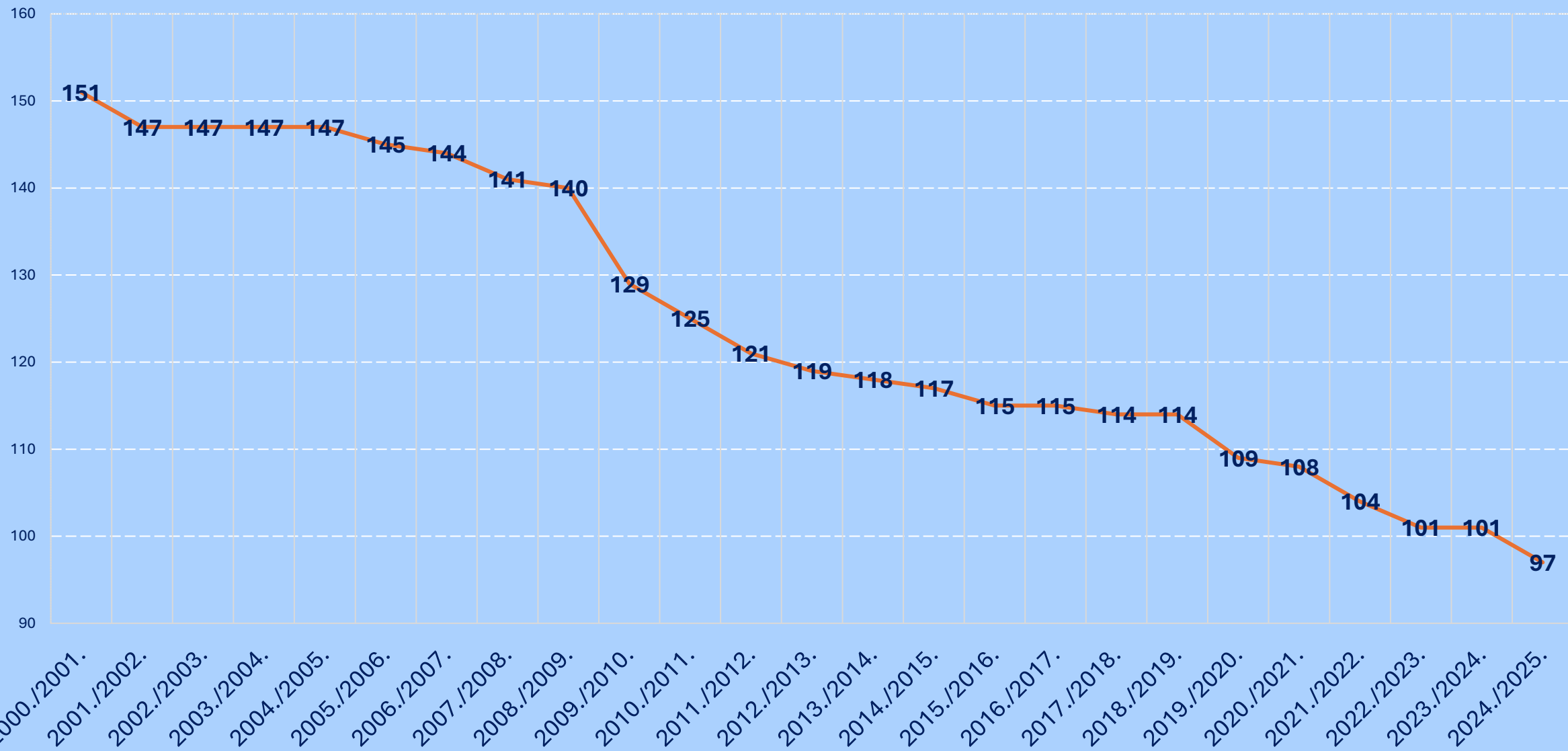
DATA SOURCES: (1) CSB; (2) Ministry of Education and Science; (3) State Education Information System; (4) Latvia Open Data portal (data of the 2024/2025 academic year)



MUNICIPAL SCHOOLS OF RIGA CITY 2024/2025



DYNAMICS OF THE NUMBER OF SCHOOLS

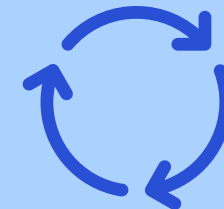


DIRECTIONS FOR IMPROVING THE SCHOOL NETWORK

The strategies for improvement of the school network in the city can be divided into three distinct phases:

- The period leading up to 2015, marked by the focus on ensuring **accessibility** as a crucial transition.
- The phase from 2015 to 2018, which emphasized the importance of ensuring **quality**.
- The years 2019-2021 and 2022-2025, during which the central focus is on the **quality education available for all**.

Most of the directions are **relevant in all periods**, they do not disappear with the end of the period, the emphases and methods for their implementation change.



THE MAIN PRINCIPLES OF IMPROVING THE SCHOOL NETWORK BY 2015

Organizing the physical network, ensuring accessibility and environmental compliance

- **Use of buildings** built for the needs of preschool educational institutions in **accordance with their basic functions**
- Release of **privately un legal entity** owned buildings
- **Relocation of schools**, releasing buildings not intended for school functions
- **Reorganization, liquidation** of schools with the aim of saving resources and unifying administrations
- Opening of **preschool** educational groups **at schools**



THE MAIN PRINCIPLES OF IMPROVING THE SCHOOL NETWORK FOR 2015 – 2018

Quality of secondary education. School buildings for ensuring access to primary education.

- Ensure **access to general primary education** in the Riga territory, using existing school buildings.
Support the transfer of vacant school premises to the needs of other educational institutions with the aim of preserving building resources for ensuring educational functions in the long term
- Promote the organization of the educational **process** in schools **in one shift**
- Promote the development of general secondary education institutions that implement **two or more general secondary education programs**
- Support the **transformation** of secondary schools into primary schools (1-9) in cases of a significant reduction in the number of students, considering the results of state testing and the principle of accessibility
- Liquidation of the second shift (completed in 2018)



THE MAIN PRINCIPLES OF IMPROVING THE SCHOOL NETWORK FOR 2019 – 2021

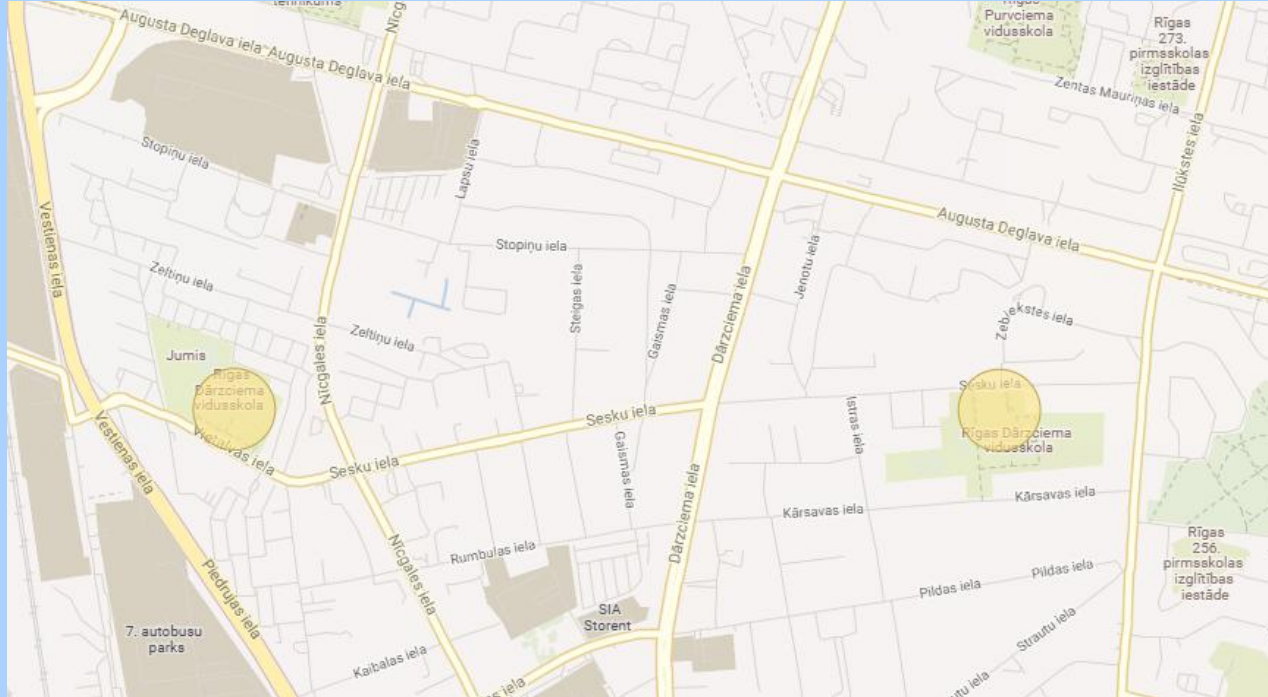
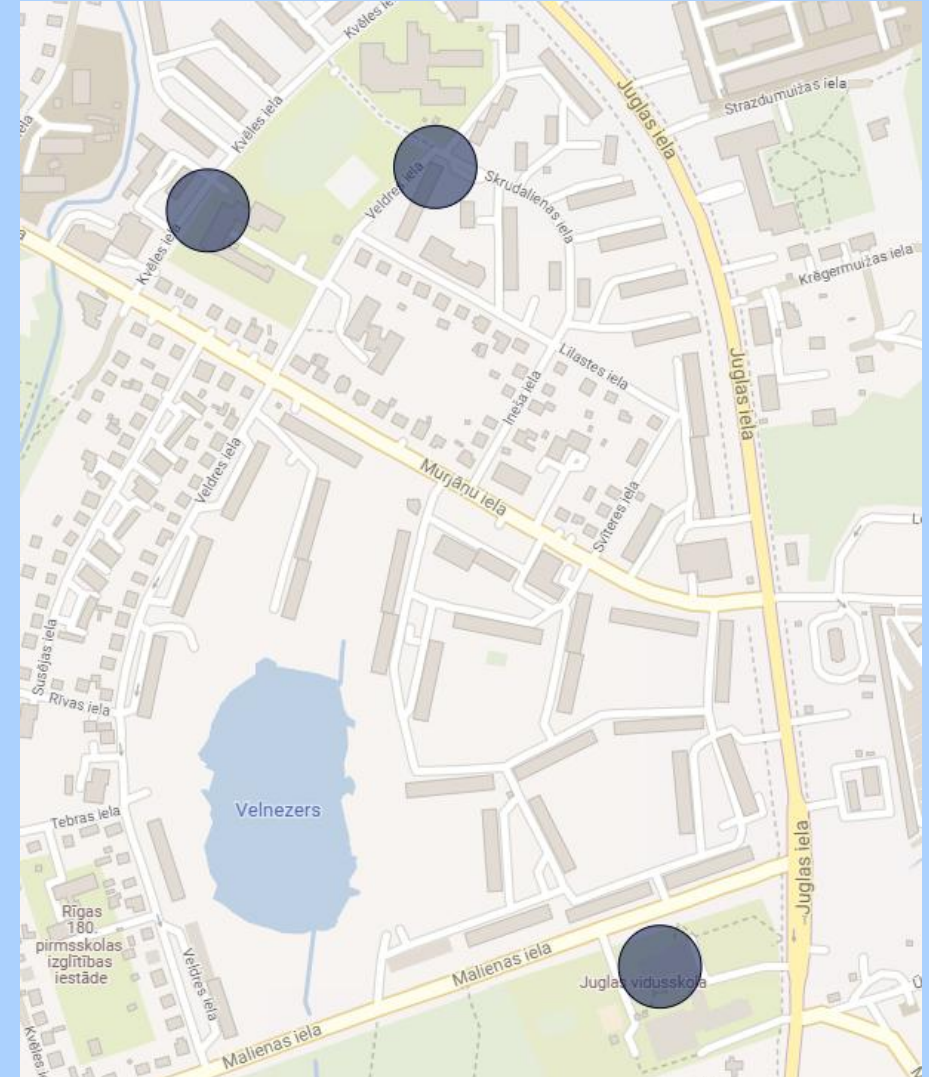
We are concentrating all our efforts so that changes to the school network will facilitate the introduction of new content and the shift of secondary education in the state language, as well as the improvement of the learning environment.

- Ensuring access to **quality primary education** in **neighborhoods**
- Ensuring changes to the **secondary school network**, considering the quality indicators set out in regulatory enactments, the minimum number of students and the proportion of languages used in the learning process, including reform of the educational content
- **Modernization** of the **school learning environment**, ensuring the provision of quality in general education, support for the development of the natural sciences and the introduction of educational content based on the **competency approach**
- Changing the names of **boarding schools, special education institutions** and **evening schools**, reorganization or internal reorganization in accordance with the requirements of regulatory enactments



EXAMPLES OF SECONDARY SCHOOL NETWORK CHANGES

Riga Jugla Secondary School



Riga Dārziems Secondary School



THE MAIN PRINCIPLES OF IMPROVING THE SCHOOL NETWORK FOR 2022 – 2024



Accessibility

establishing primary school coverage in neighborhoods, concentrating secondary school in general secondary education institutions providing quality education in neighborhoods



Improving the learning environment

information communication technology resources, ergonomic furniture for students and teachers, provision of equipment necessary for learning content, prioritizing a even investment approach in all schools



Renovation and development of infrastructure

planning and implementing renovation and development works of school buildings, premises and territories.



RESULTS OF THE IMPROVEMENT OF THE SCHOOL NETWORK



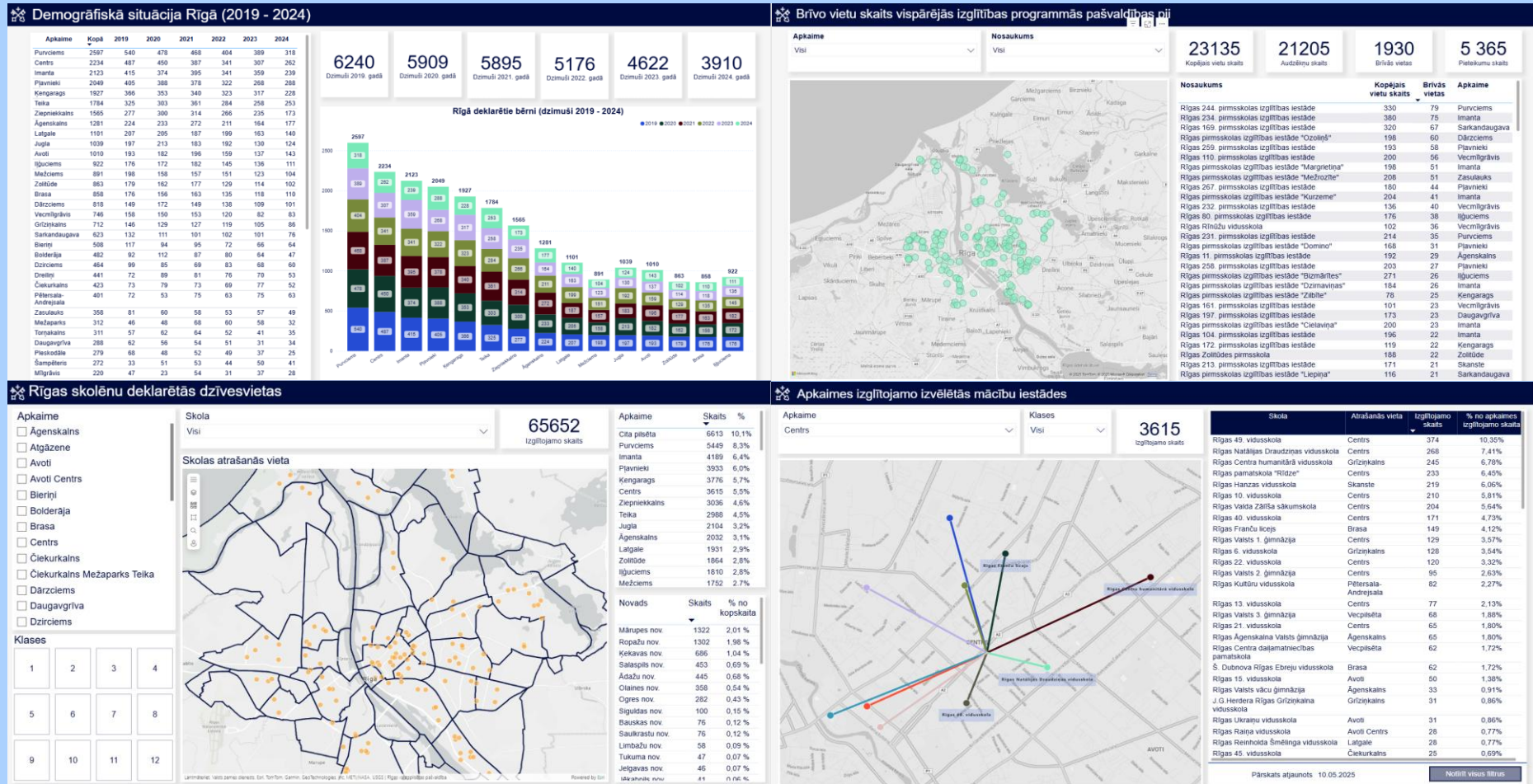
15 secondary schools



15 primary schools



Data driven decision making – Power BI Data maps with real time data



RESULTS OF THE IMPROVEMENT OF THE SCHOOL NETWORK



Over the past 24 years, **169** school network optimization measures have been implemented, including school relocations, internal reorganizations, changing status, type and/or name, vacating buildings, adding preschools, interest education institutions, etc.



The number of schools has been reduced by **54** legal entities



Preschool groups have been established in **14** schools



41 buildings have been vacated:

- preschool function restored in 12 buildings
- other municipal functions are implemented in 15 buildings (including interest education institutions, Riga Educational and Informational Methodological Center, Riga Central Library branch and other IKSD structures, etc.)
- 14 buildings have been expropriated - not used for municipal functions



CHALLENGES

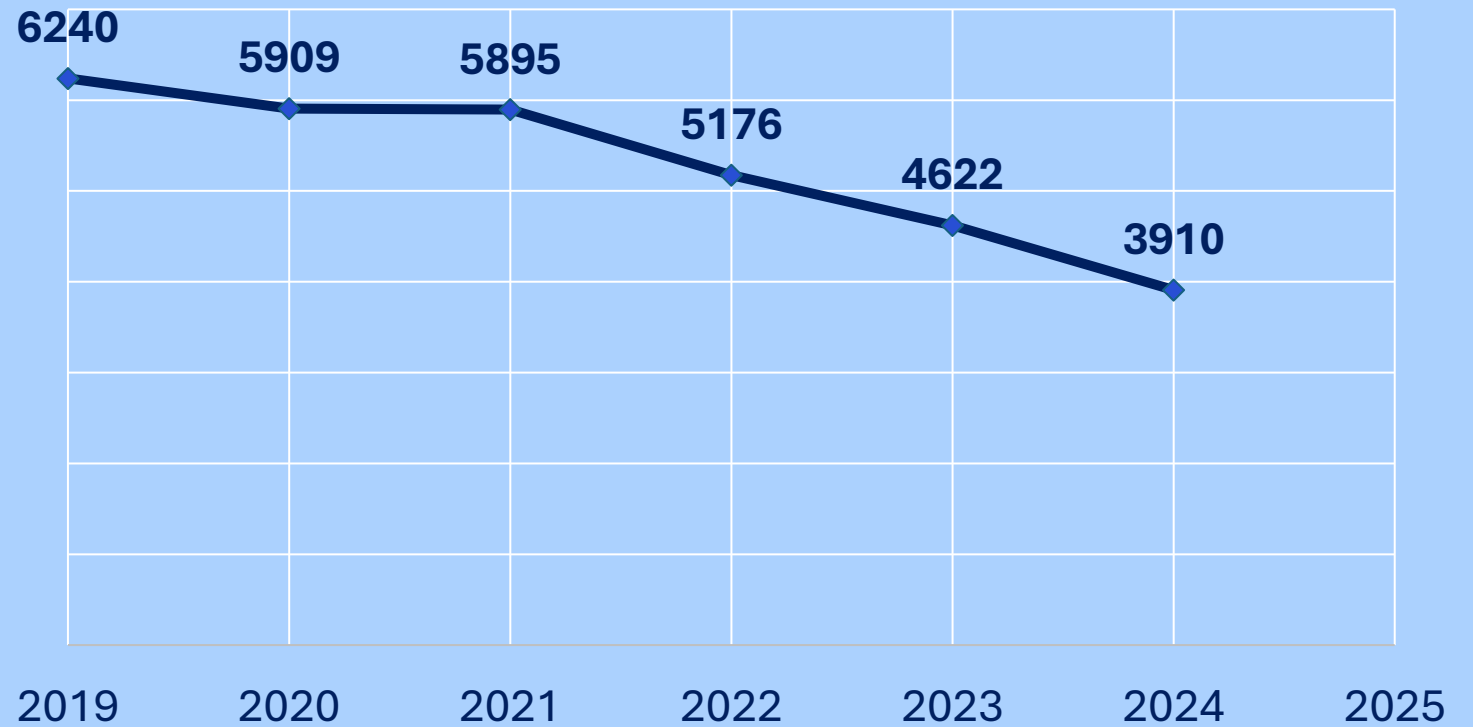
- In some cases, the implementation of optimization measures is hindered by **preschool groups located in school buildings**
- In several neighborhoods (Mežciems, Purvciems, Teika) it is not possible to increase access to education due to the **number and capacity of school buildings**
- Neighborhoods (Dreiliņi) where new housing is being developed and there is **insufficient/no educational infrastructure**
- In the city there is practically **no possibility to transfer school operations** to another building to be able to renovate the entire building
- **Greater Riga Area** impact



CHALLENGES

- Implementation of a «Unified School»
- **transition to studies only in Latvian**
- **Remuneration reform**
- Inclusion of **Ukrainian children**
- **Second foreign language** provision
- **Infrastructure** of school buildings -
the city is changing
- Lack of **pedagogical staff**

Demographics in Riga 2029 – 2024
Newborns declared in Riga



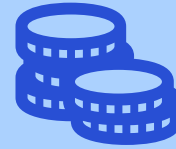
BENEFITS



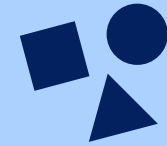
Quality



**Optimization of
administrative
resources**



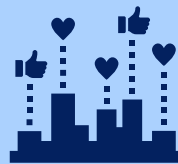
**Raise of
teachers'
salaries**



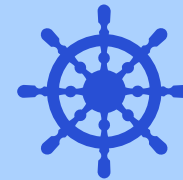
**Wider access to
hobby/after class
activities**



**Alignment between
schools**



**Optimal usage of
buildings**



Better governance



THANK YOU!

