



ETF  
Network for  
Excellence

# GRETA

**GREENING  
RESPONSES** to  
**EXCELLENCE** through  
**THEMATIC  
ACTIONS**

**Susanne M. Nielsen, Lead Expert for GRETA**

# ETF'S NETWORK OF EXCELLENCE (ENE)



ETF  
Network for  
Excellence

## Supporting Centres of Vocational Excellence

> 300 members from > 40 countries worldwide

Peer learning network

Development of strategic partnerships

Supporting lifelong learning



# GRETA

## A global greening VET partnership



# Whole institutional approach to greening vet



# GRETA publication

## ‘Greening of VET – Processes, Practices and Policies’



# THE SKILLS ECOSYSTEM in Transition .....

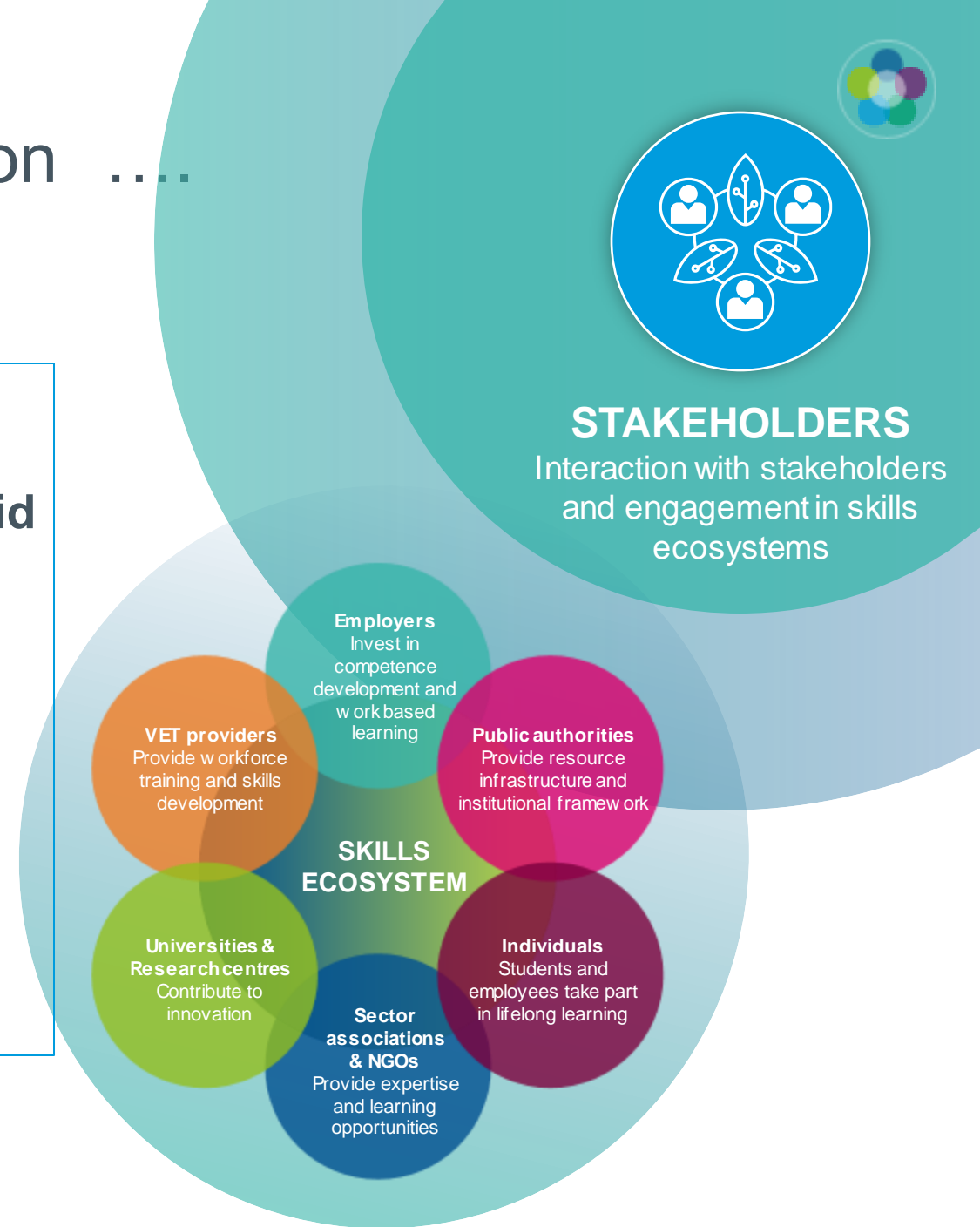


## Past:

- ❖ Provision of the same skills for years
- ❖ Skills demand was analysed by policy actors and experts

## Present:

- ❖ Skills change at a rapid pace
- ❖ Innovation requires input from different specialisations
- ❖ Necessary to have a international dimension
- ❖ Need for new types of stakeholders



# Programme for today – 3 building blocks

1. Unpacking the skills ecosystem  
Dynamics, actors and enabling factors
2. Skills for the green transition – practice insights  
Construct 2, Georgia  
Centre of Excellence for Construction, Moldova
3. Moving forward in green skills provision  
Panel exchange with practitioners  
from Slovenia and North Macedonia

## Menti exercise





European Training Foundation



ETF  
Network for  
Excellence

[smn@etf.europa.eu](mailto:smn@etf.europa.eu)