

THE YOUTH TRANSITION IN THE ETF PARTNER COUNTRIES

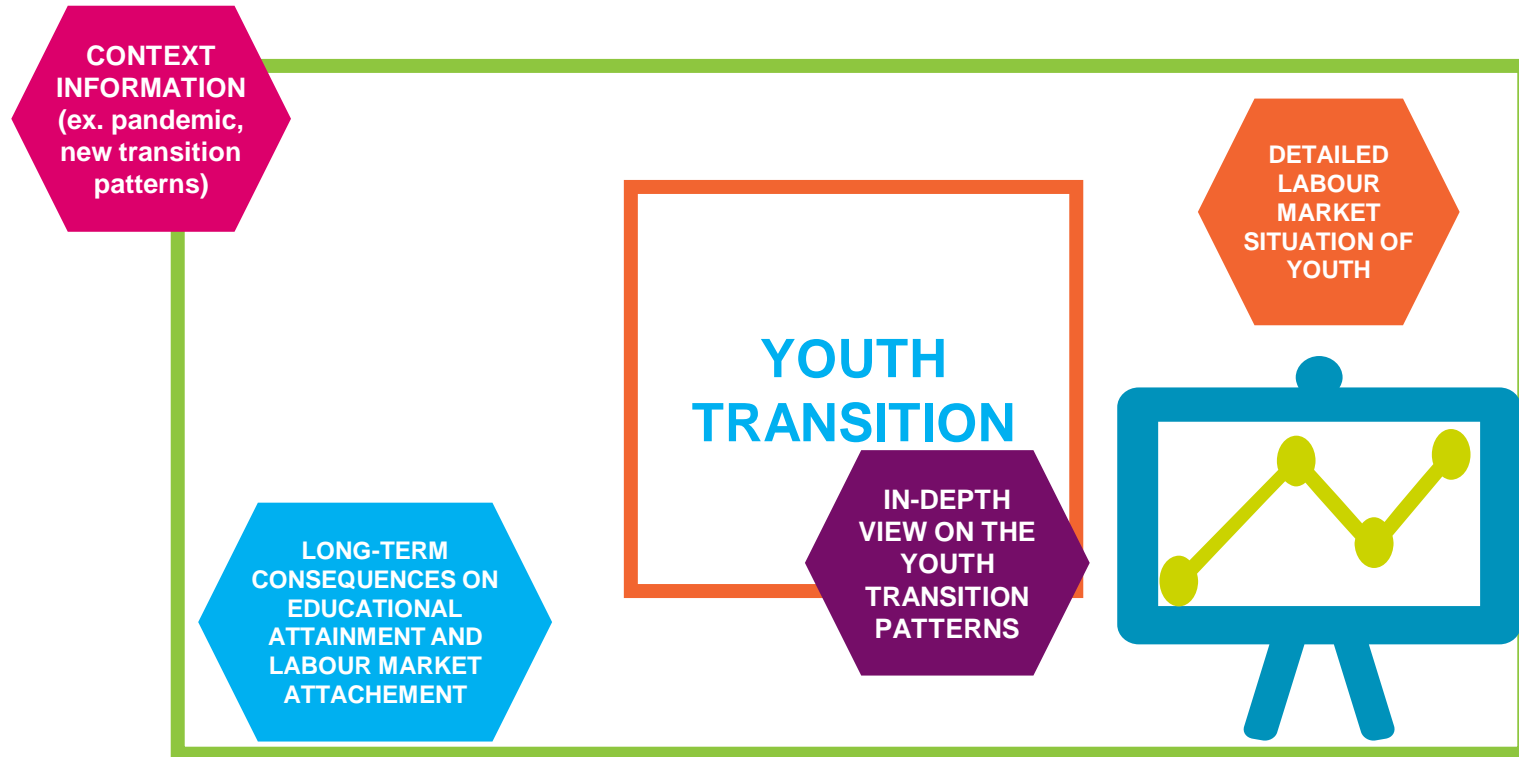
FRAMING – MEASUREMENT - POLICIES

MIRCEA BADESCU (ETF)

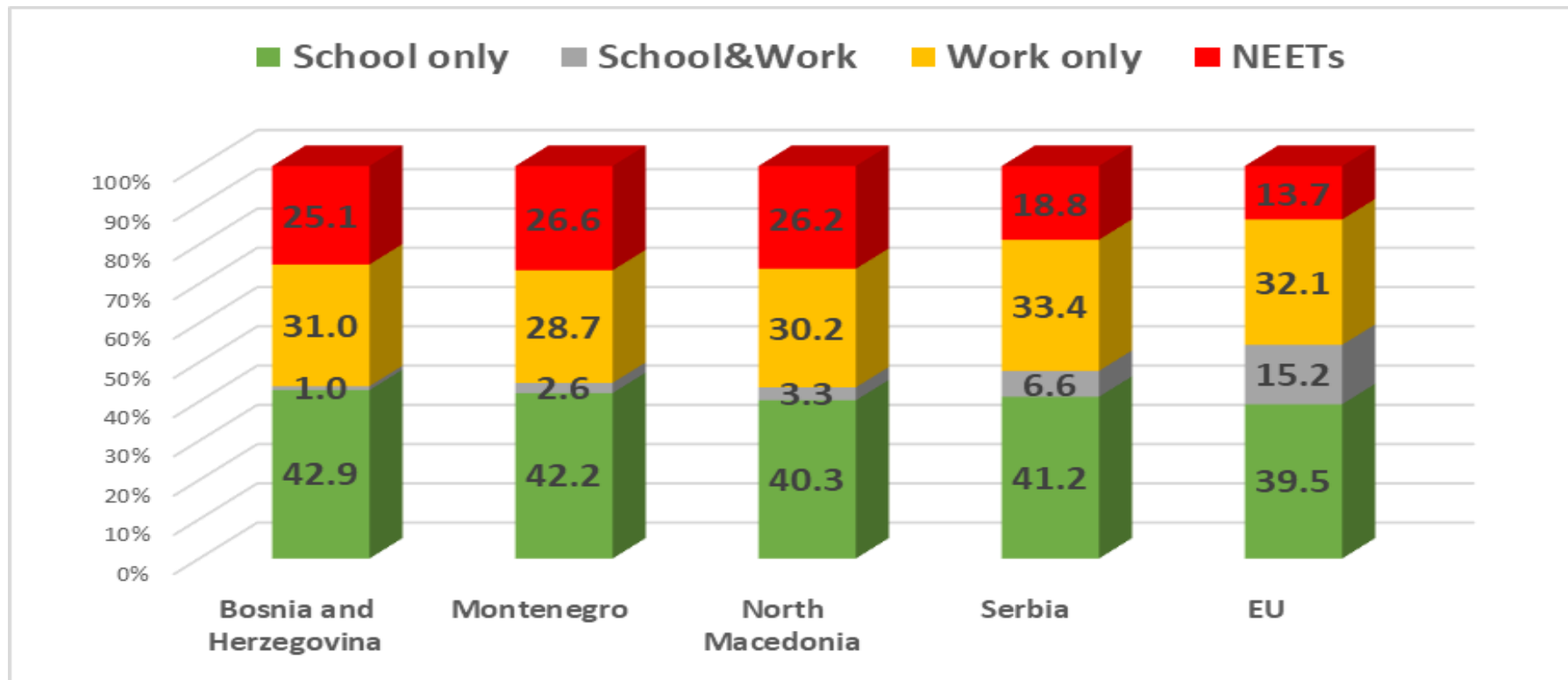


FRAMING THE YOUTH TRANSITION

WHAT ARE WE USUALLY LOOKING AT ?



STARTING POINT: WHERE ARE THE *YOUTH TODAY* ?



Source: ETF KIESE, Eurostat (2021 or latest)

Note: As a % of youth aged 15-29. Totals don't add up to 100 due to those with an unknown status.



FRAMING - MEASUREMENT - POLICIES

MONITORING THE YOUTH GUARANTEE



**POLICY LEVERS AND CONTEXTS SHAPING
YOUTH TRANSITION POLICIES IN COUNTRIES**



YOUTH GUARANTEE IN THE EU

THE INDICATORS FRAMEWORK (2021)

LABOUR MARKET SITUATION OF YOUTH

NEET RATE (15-29) BY LABOUR MARKET STATUS (UNEMPLOYED/INACTIVE)

Not all NEETs are the same: clear differences by age/gender/labour status

YOUTH EMPLOYMENT RATE AGED 15-29

Young women more likely to be inactive, (re)entering more difficult on the LM

YOUTH UNEMPLOYMENT RATE AGED 15-29

Measures the overall probability of being unemployed, widely quoted by media

YOUTH UNEMPLOYMENT RATIO AGED 15-29

Gauging better the youth inactivity as most youth are still in school (not active)

RATIO YOUTH (15-29)/ADULT (30-74) UNEMPLOYMENT RATIO

Indicates structural aspects in the labour market

LONGER-TERM EFFECTS OF THE YOUTH GUARANTEE IMPLEMENTATION

UPPER-SECONDARY COMPLETION FOR YOUTH AGED 20-24

Upper secondary has become the 'entry ticket' to the knowledge society

SHARE OF LOWER-EDUCATED PEOPLE AGED 20-29

While some jobs still exists for them, the labour market prospects declines

SHARE OF HIGHER-EDUCATED PEOPLE AGED 30-34

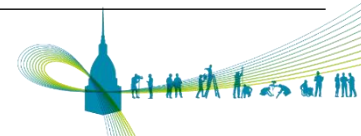
Holding a university degree not always meaning employed/job-matched

EARLY LEAVERS FROM EDUCATION/TRAINING AGED 18-24

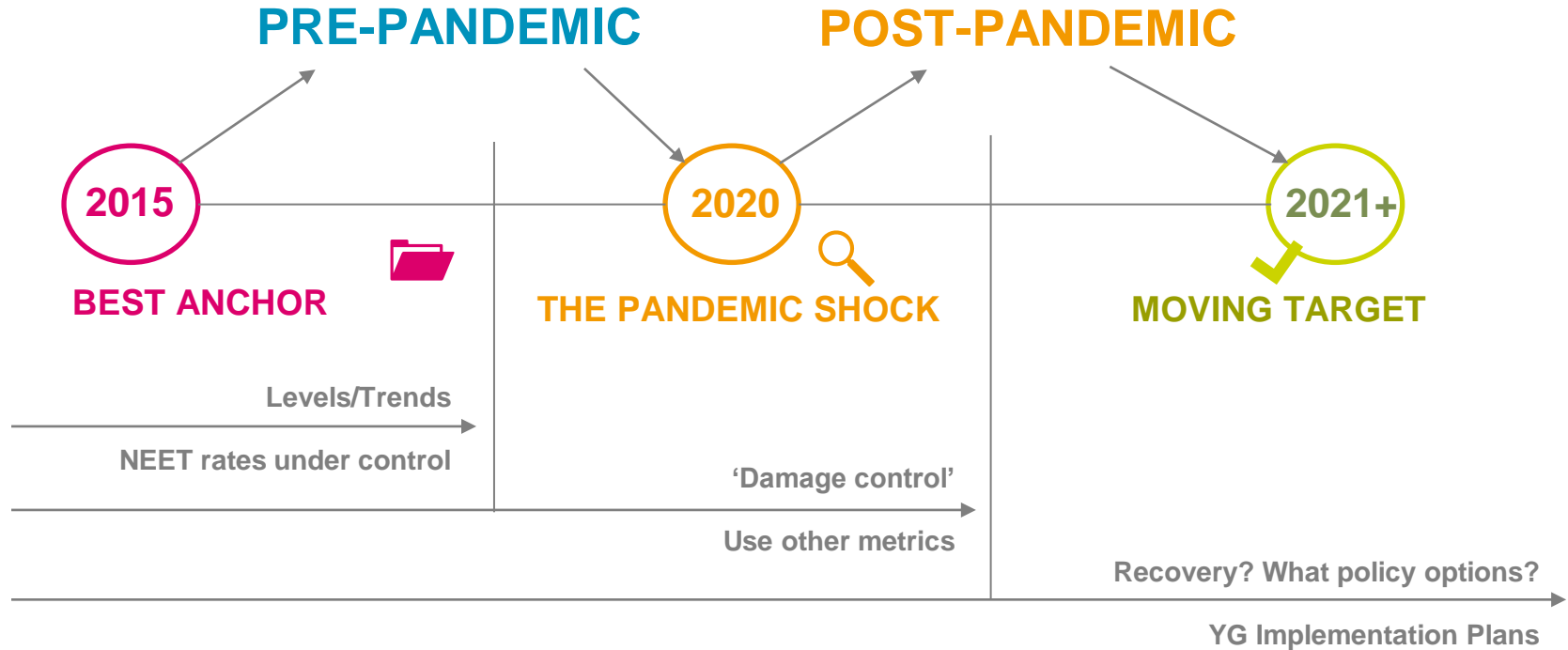
Keeping youth in school/upskilling them/mitigating risk of social exclusion

EMPLOYMENT RATE OF RECENT GRADUATES AGED 20-34

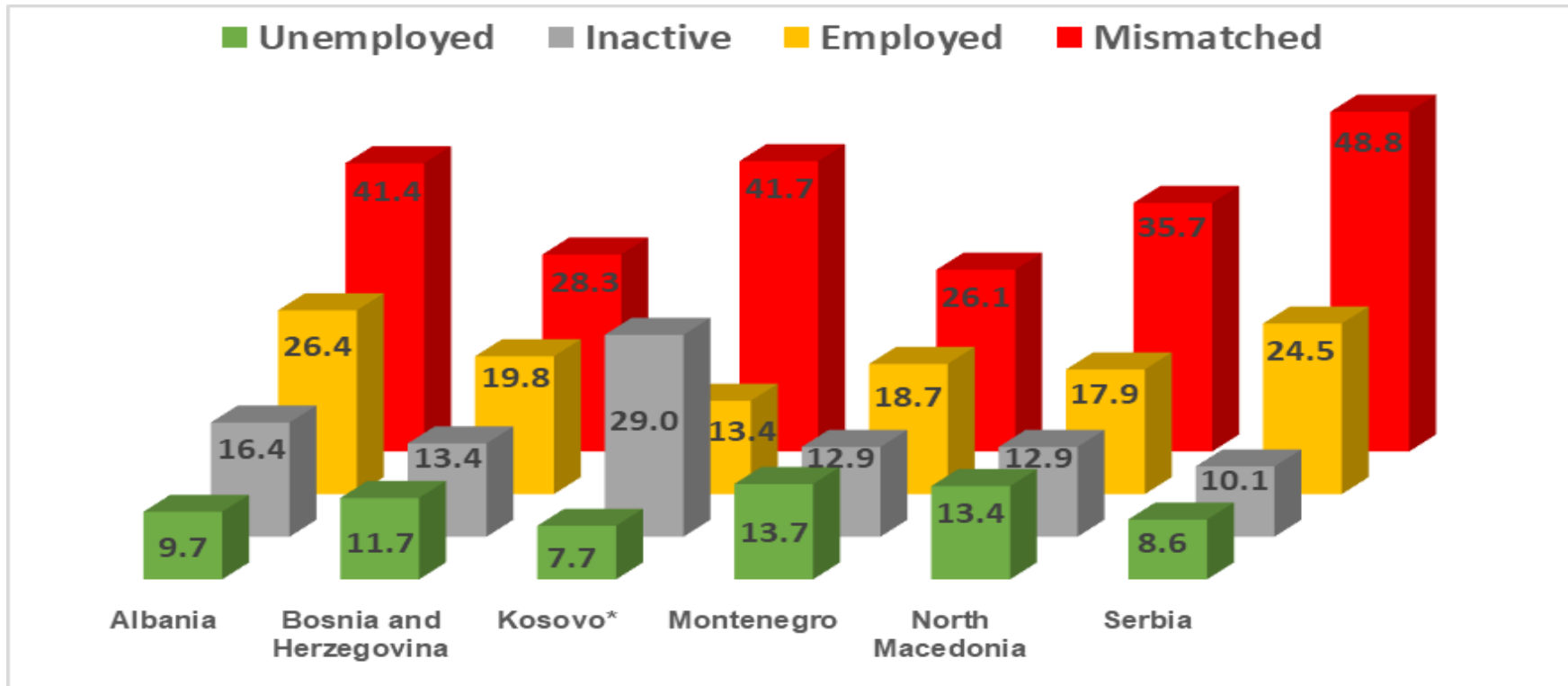
Good proxy for youth employability allowing many splits (VET/tertiary)



LOOKING BACK TO MOVING ON !



YOUTH TRANSITION: *WHAT PATTERNS?*



Source: ETF KIESE, Eurostat (2021 or latest)

Note: As a % of youth aged 15-24/15-29. Totals don't add up to 100 due to the various metrics used.

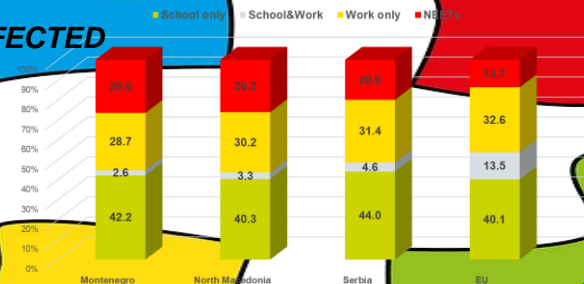


YOUTH TRANSITION: *WHAT MATTERS ?*

NOT THE SAME NEETs !

MOST NEETs ARE INACTIVE
FEWER ARE UNEMPLOYED

YOUNG WOMEN ARE MORE AFFECTED



THE EFFECT OF PANDEMIC !

YEARLY INCREASES IN ALL COUNTRIES BUT
SOME DISPLAYING UP TO **5pp INCREASE**
COUPLED WITH DROP IN EMPLOYMENT RATE

TIME MATTERS !

TRANSITION HAS BECOME MORE PROLONGED,
UNSTABLE, LESS PREDICTABLE. SCHOOL & WORK
IS NOW A COMMON CHOICE / NECESSITY

ATYPICAL/INCOMPLETE

MORE CHALLENGES THAN ADULTS
TO ENTER LABOUR MARKET, VERY
FEW TRANSIT TO A MATCHED JOB,
MOST ARE TRAPPED IN LOW-
SKILLED/LOW-PAID JOBS



TAKE-AWAY: FEW *KEY MESSAGES*

- THE MONITORING FOLLOWS A CLEAR *INDICATOR FRAMEWORK*
- SOME *DATA* ARE *PARTICULARLY NEEDED* (EX. *NEETS BY LABOUR STATUS*)
- SAME FRAMEWORK - DIFFERENT *USE & MEANING* OF INDICATORS
- TACKLING THE *NEW PATTERNS* OF YOUTH TRANSITION
- INTER-INSTITUTIONAL *COOPERATION* IS CRUCIAL



USEFUL READING

ETF (2022), [YOUTH TRANSITION AND SKILLS MISMATCH IN EASTERN PARTNERSHIP COUNTRIES](#)

ETF (2022), [YOUTH TRANSITION AND SKILLS MISMATCH IN EU SOUTHERN NEIGHBOURHOOD](#)

ETF (2021), [YOUTH DISENGAGEMENT AND SKILLS MISMATCH IN THE WESTERN BALKANS](#)

ETF (2022), [KEY INDICATORS ON EDUCATION, SKILLS AND EMPLOYMENT](#)

ETF (2022), [SKILLS MISMATCH MEASUREMENT IN ETF PARTNER COUNTRIES](#)

ETF (2020), [UNLOCKING YOUTH POTENTIAL IN SOUTH-EASTERN EUROPE AND TURKEY: SKILLS DEVELOPMENT FOR LABOUR MARKET AND SOCIAL INCLUSION](#)

EUROSTAT (2021) [STATISTICS ON YOUNG PEOPLE NEITHER IN EMPLOYMENT NOR IN EDUCATION OR TRAINING](#)

ETF (2015), [YOUNG PEOPLE NOT IN EMPLOYMENT, EDUCATION OR TRAINING: AN OVERVIEW IN THE ETF PARTNER COUNTRIES](#)



THANK YOU !

WWW.ETF.EUROPA.EU

