



How to support the innovative potential of educators?



CNL RESEARCH QUESTIONS:

A. Which specific characteristics of innovations in teaching and learning **contribute** towards better learning experiences and outcomes and are also useful in explaining the success of the innovation?

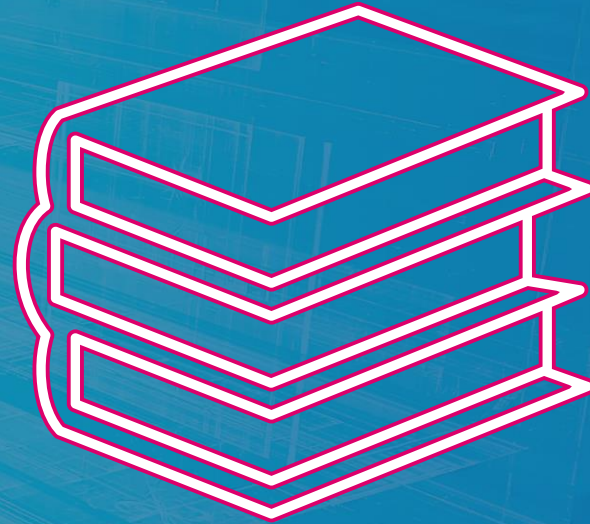
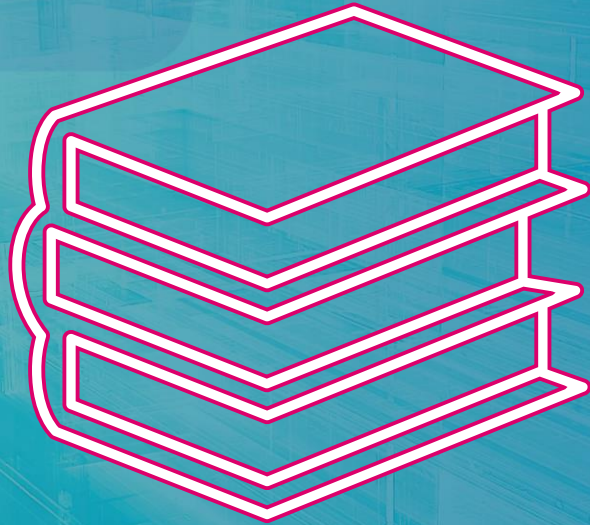
B. What factors **facilitate** the initiation, development, implementation, sustainability and wider uptake of innovations in teaching and learning?

C. What factors **hinder** the initiation, development, implementation, sustainability and wider uptake of innovations in teaching and learning?

CASE STUDIES AND CROSS ANALYSIS



What do we know from literature?

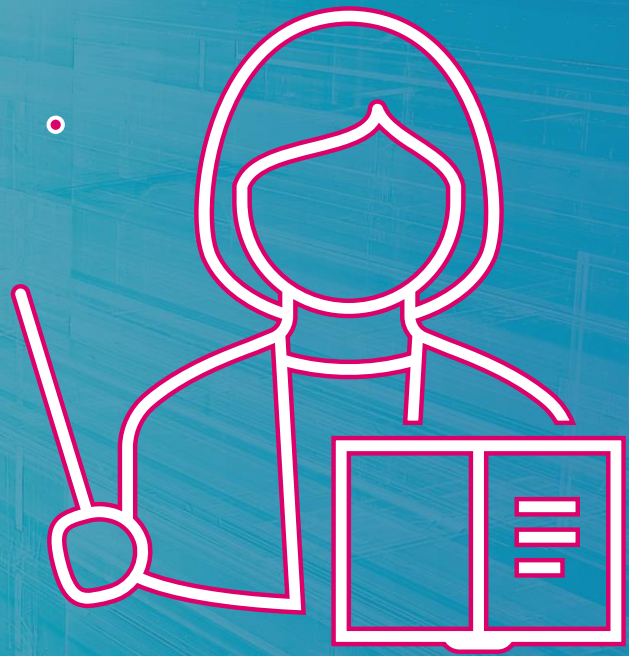


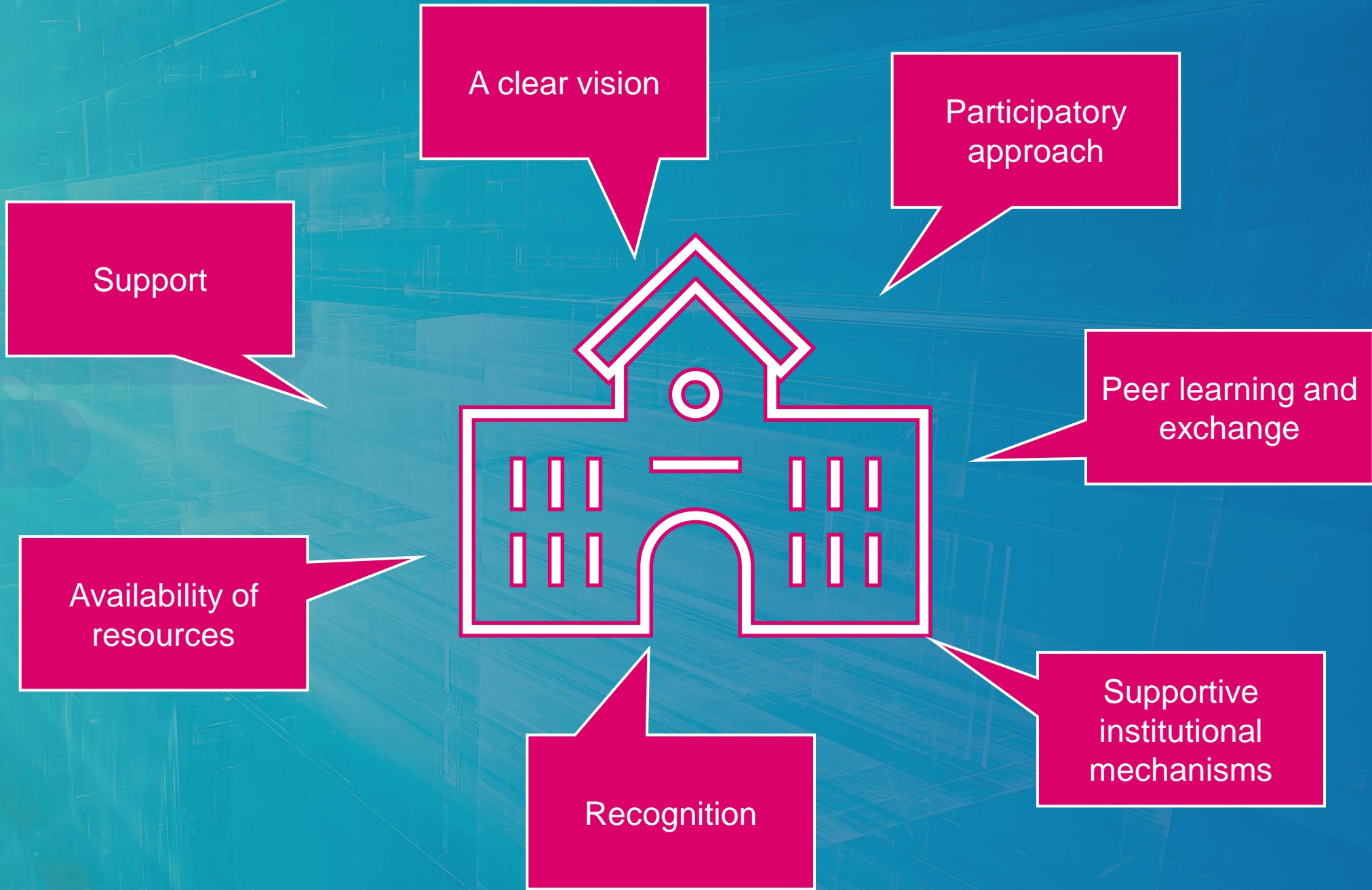
Personality traits

Competencies and experiences

Motivation, self-efficacy and satisfaction

Beliefs





**Support systems at
regional and
national level:**

**Recognising
innovative
practices and
innovative
educators**

**Policies and
regulations**





European Training Foundation

CREATING
NEW
LEARNING



THANK YOU